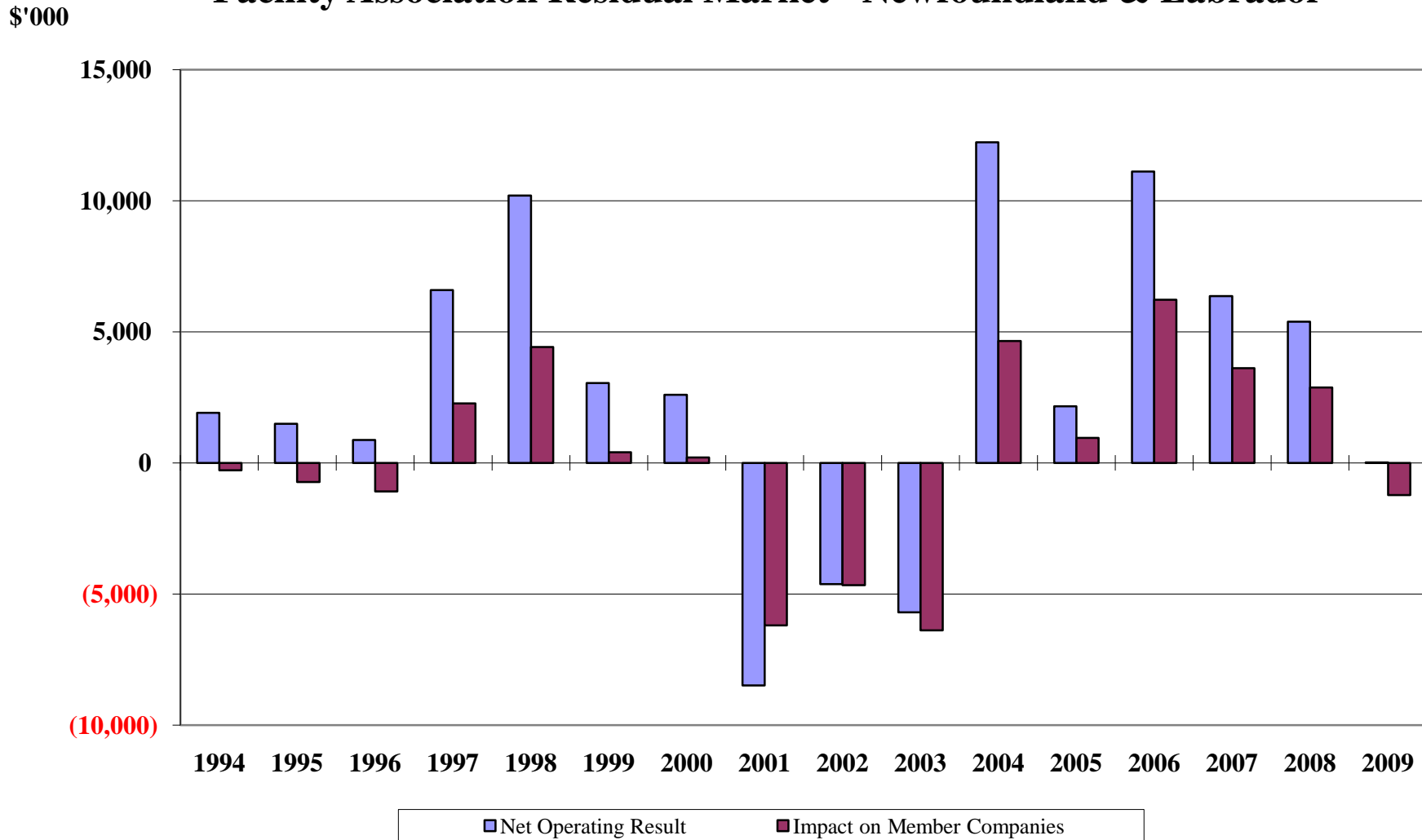


## History of Financial Results

### Facility Association Residual Market - Newfoundland & Labrador



The net operating result between 1994 and 2009 shown above is taken from Facility Association Audited Financial Statements. The "impact on member companies" illustrates the effect on member companies of, in addition to sharing in Facility Association's Net Operating Result, also having to pay income and premium taxes, health levies, association dues and incur a cost of capital due to their compulsory participation in Facility Association as described in Note 2 of the Audited Financial Statements. Member impact also includes investment income earned on Facility Association premium dollars invested directly by members and the effect of discounting.