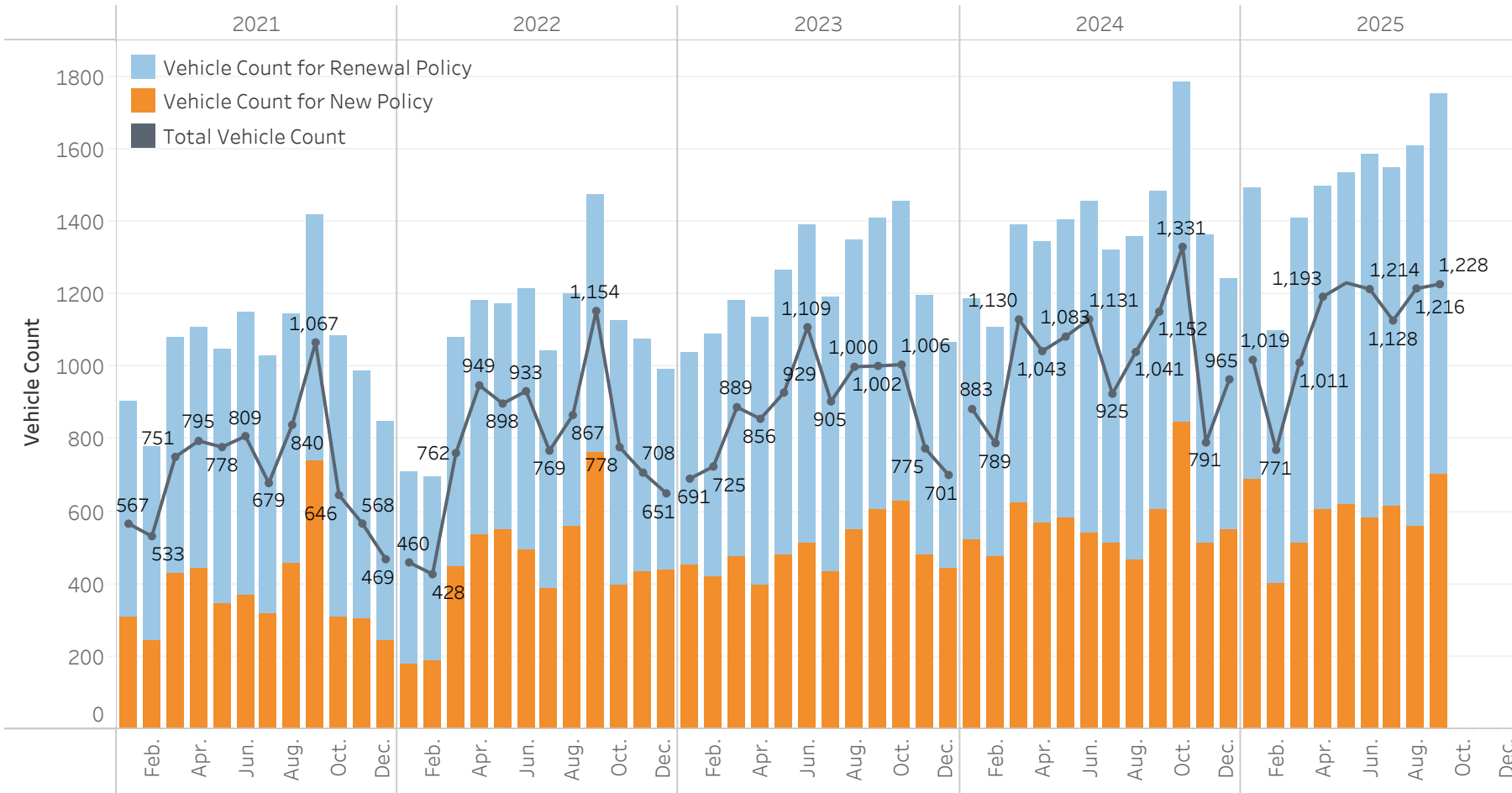


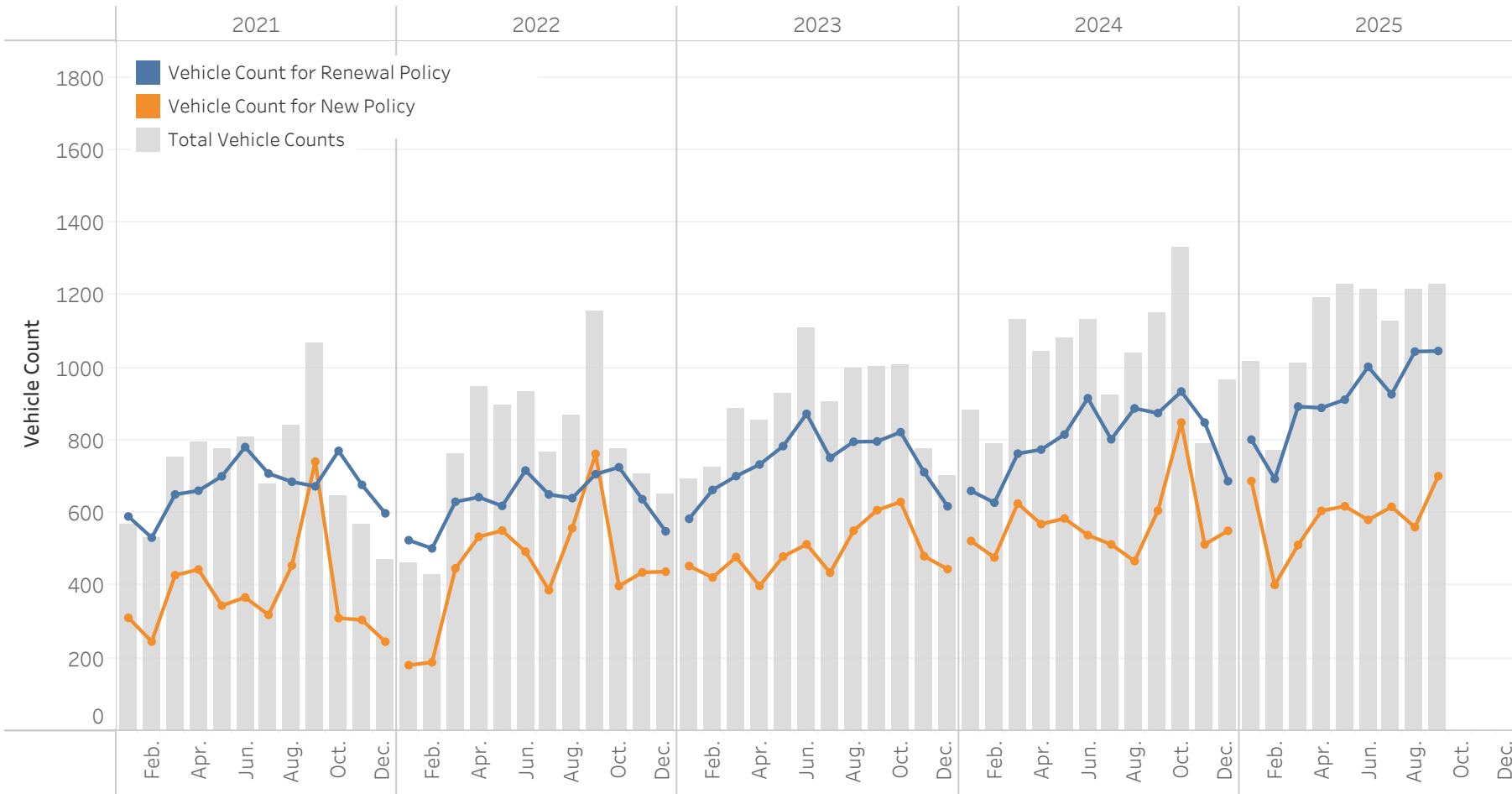
FARM Nova Scotia PPV Written Vehicle Count by New and Renewal Business (as at share date: September 2025)



Data: FARM transaction data reconciled with Monthly FARM operational reporting.

Note: Total Vehicle Count includes new, renewal, adjustment, endorsement and cancellation transactions.

FARM Nova Scotia PPV Written Vehicle Count by New and Renewal Business (as at share date: September 2025)



Data: FARM transaction data reconciled with Monthly FARM operational reporting.

Note: Total Vehicle Count includes new, renewal, adjustment, endorsement and cancellation transactions.